

GIANFRANCO  
**FERRE**  
HOME

FABRICS AND LEATHERS  
COLLECTION

GIANFRANCO  
**FERRE**  
HOME

VELVET

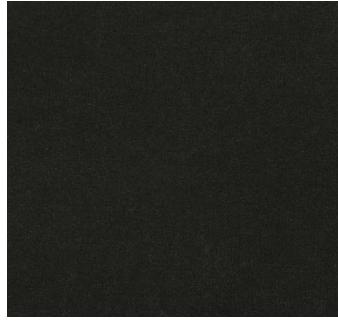
# VELVET

## COTTON

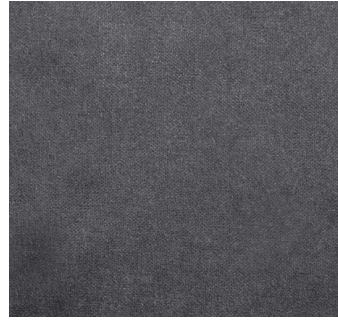
---



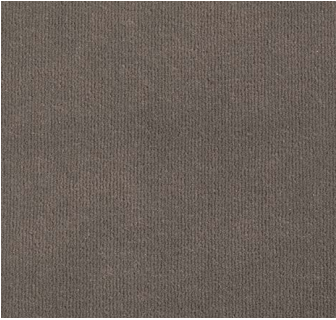
**14.02** | cat. A  
**BLACK**  
93%CO 7%PL



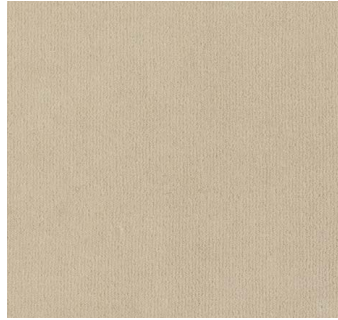
**14.22** | cat. A  
**BROWN**  
80%CO 10%PL 10%CDM



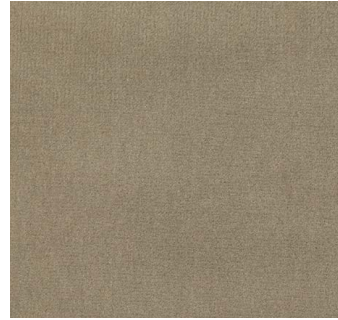
**14.05** | cat. A  
**GREY**  
100%CO



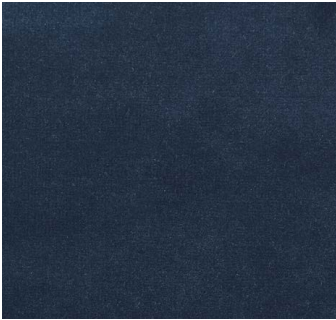
**14.16** | cat. A  
**DOVE GREY**  
93%CO 7%PL



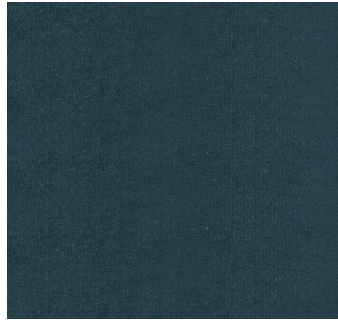
**14.17** | cat. A  
**LIGHT BEIGE**  
93%CO 7%PL



**14.18** | cat. A  
**DARK BEIGE**  
93%CO 7%PL



**14.13** | cat. A  
**BLUE**  
93%CO 7%PL



**14.37** | cat. A  
**PETROLEUM BLUE**  
93%CO 7%PL

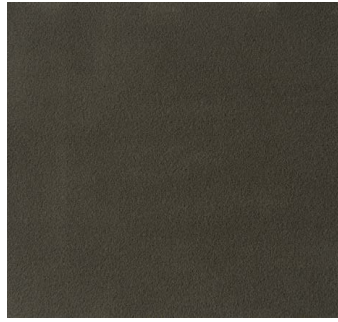
# VELVET

## FLOW

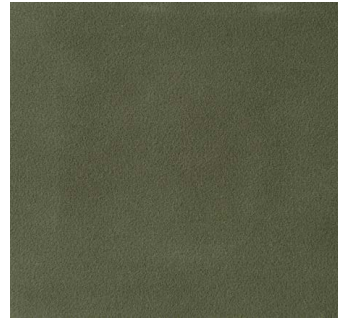
---



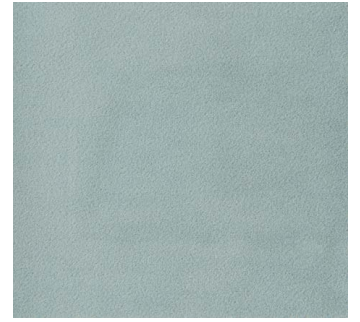
**23.22** | cat. **A**  
**06 CREAM**  
100%PL



**23.42** | cat. **A**  
**35 BROWN**  
100%PL



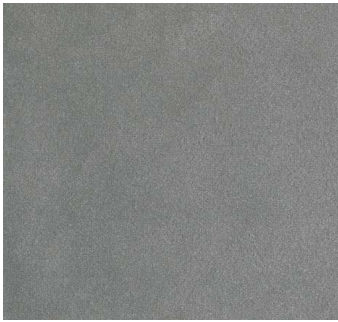
**23.43** | cat. **A**  
**02 SAGE**  
100%PL



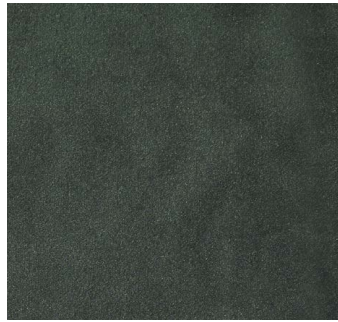
**23.44** | cat. **A**  
**12 LIGHT BLUE**  
100%PL

## LIGHT

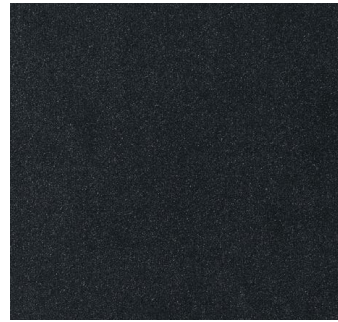
---



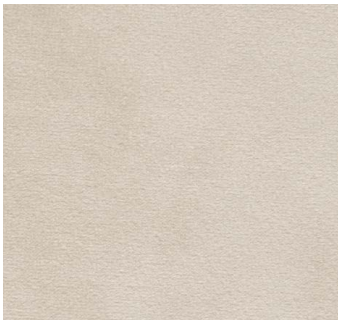
**17.06** | cat. **B**  
**03 AVIO**  
100%PL



**17.20** | cat. **B**  
**19 DARK GREEN**  
100%PL



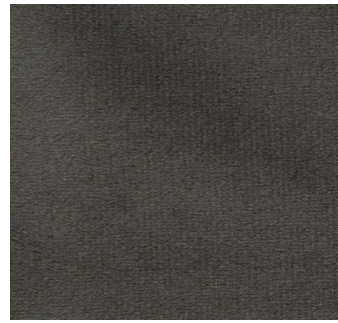
**17.24** | cat. **B**  
**25 DARK BLUE**  
100%PL



**23.83** | cat. **B**  
**10 LINEN**  
100%PL



**23.84** | cat. **B**  
**11 MOLESKIN**  
100%PL



**23.85** | cat. **B**  
**06 SLATE**  
100%PL

# VELVET

## TENDER

---



**23.68** | cat. A  
**01 MUSK**  
100%CO



**23.69** | cat. A  
**02 GREEN BOTTLE**  
100%CO



**23.70** | cat. A  
**64 SAND**  
100%CO



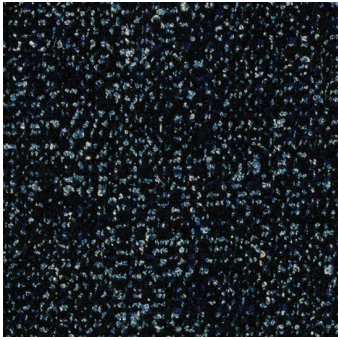
**23.71** | cat. A  
**06 CERULEAN**  
100%CO

GIANFRANCO  
**FERRE**  
HOME

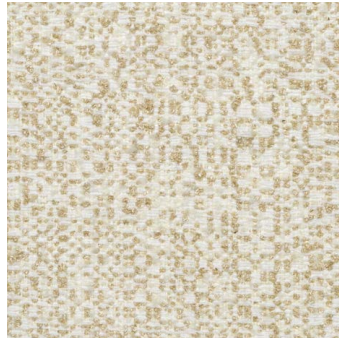
BOUCLE

# BOUCLE

## CHAOS



**23.17 | cat. B**  
**01 DEEP NIGHT**  
38%PC 28%PL 14%CO 7%WO 6%VI 4%LI  
3%PA



**23.19 | cat. B**  
**03 GOLD TOUCH**  
38%PC 28%PL 14%CO 7%WO 6%VI 4%LI  
3%PA



**23.32 | cat. B**  
**05 CHARCOAL**  
38%PC 28%PL 14%CO 7%WO 6%VI 4%LI  
3%PA



**23.33 | cat. B**  
**04 DUNE**  
38%PC 28%PL 14%CO 7%WO 6%VI 4%LI  
3%PA

## CURLY



**23.11 | cat. B**  
**01 CLOUD**  
34%VI 33%PC 17%WO 8%PL 4%LI 4%CO



**23.12 | cat. B**  
**02 SAND**  
34%VI 33%PC 17%WO 8%PL 4%LI 4%CO



**23.15 | cat. B**  
**50 LIGHT BLUE**  
45%CO 19%CV 15%WO 13%PAN 8%PA



**23.45 | cat. B**  
**26 GREEN TEA**  
34%VI 33%PC 17%WO 8%PL 4%LI 4%CO



**23.46 | cat. B**  
**10 TAUPE**  
34%VI 33%PC 17%WO 8%PL 4%LI 4%CO

# BOUCLE

## SNOW

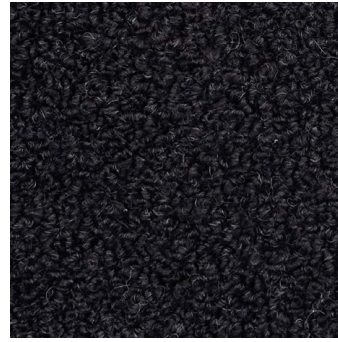
---



**23.21 | cat. B**  
**02 IVORY**  
35%PC 31%WV 23%PL 10%CO 1%AF



**23.39 | cat. B**  
**10 GREEN**  
35%PC 31%WV 23%PL 10%CO 1%AF



**23.40 | cat. B**  
**15 BROWN**  
35%PC 31%WV 23%PL 10%CO 1%AF



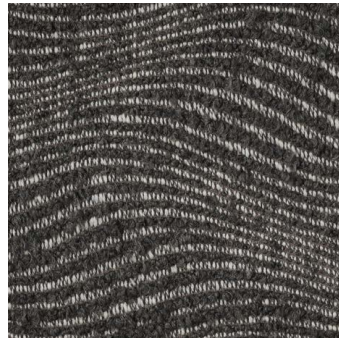
**23.41 | cat. B**  
**12 TAUPE**  
35%PC 31%WV 23%PL 10%CO 1%AF

## SOFT WAVE

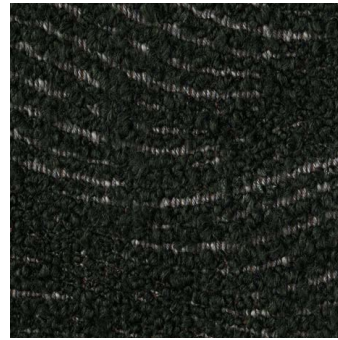
---



**23.23 | cat. A**  
**02 WHITE**  
35%CO 27%PL 23%PC 11%WO



**23.47 | cat. A**  
**12 DARK TAUPE**  
35%CO 27%PL 23%PC 11%WO



**23.48 | cat. A**  
**17 GREEN BOTTLE**  
35%CO 27%PL 23%PC 11%WO



GIANFRANCO  
**FERRE**  
HOME

FABRIC

# FABRIC

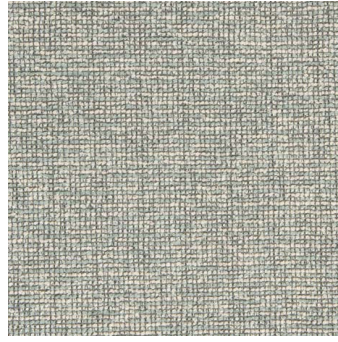
## BUMPY



23.07 | cat. A  
01 DUNE  
77%PL 16%PA 7%LI



23.29 | cat. A  
04 BLACK ASH  
77%PL 16%PA 7%LI



23.30 | cat. A  
08 CLEAR SEA  
77%PL 16%PA 7%LI



23.31 | cat. A  
07 FOREST  
77%PL 16%PA 7%LI

## CANVAS



23.51 | cat. A  
002 SCATTERED SAND  
51%VI 27%LI 14%CO 7%PL 1%PC



23.52 | cat. A  
003 RAW DIAMOND  
51%VI 27%LI 14%CO 7%PL 1%PC



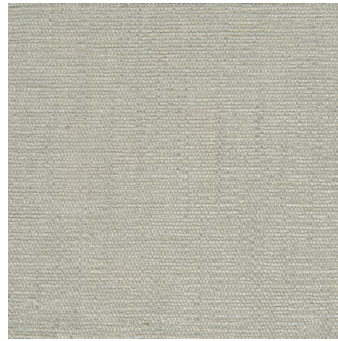
23.53 | cat. A  
108 GREY SKY  
51%VI 27%LI 14%CO 7%PL 1%PC



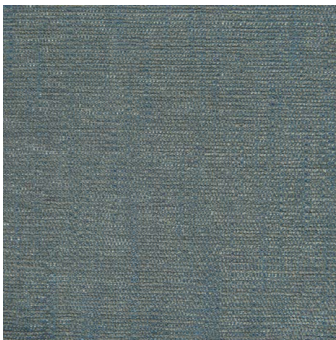
23.54 | cat. A  
005 TAWNEY  
51%VI 27%LI 14%CO 7%PL 1%PC



23.55 | cat. A  
119 LIGHT ASH  
51%VI 27%LI 14%CO 7%PL 1%PC



23.56 | cat. A  
010 OCEAN TIDE  
51%VI 27%LI 14%CO 7%PL 1%PC



23.57 | cat. A  
120 CERULEAN  
51%VI 27%LI 14%CO 7%PL 1%PC



23.58 | cat. A  
137 BLUE OCEAN  
51%VI 27%LI 14%CO 7%PL 1%PC

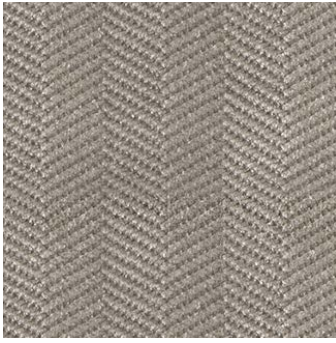


23.59 | cat. A  
109 GREEN FOREST  
51%VI 27%LI 14%CO 7%PL 1%PC

# FABRIC

## CHEVRON

---



**20.01** | cat. A  
**03 GREY**  
45%CO 25%PL 15%VI 15%PL



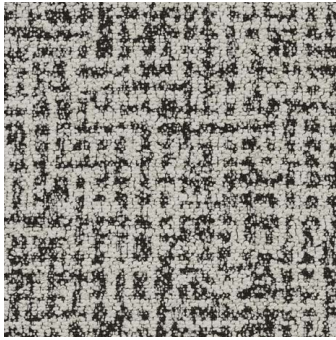
**23.49** | cat. A  
**06 MILK**  
45%CO 25%PL 15%VI 15%PL



**23.50** | cat. A  
**04 MUSK**  
45%CO 25%PL 15%VI 15%PL

## FOGGY

---



**23.06** | cat. A  
**01 BLACK & WHITE**  
58%PL 23%PC 10%CO 9%PA



**23.37** | cat. A  
**07 BEIGE CREAM**  
58%PL 23%PC 10%CO 9%PA



**23.38** | cat. A  
**03 BROWN GREEN**  
58%PL 23%PC 10%CO 9%PA

## GEO

---



**22.06** | cat. A  
**05 TAUPE**  
69%PL 22%VI 9%LI



**23.27** | cat. A  
**08 MILK**  
69%PL 22%VI 9%LI



**23.28** | cat. A  
**06 GREIGE**  
69%PL 22%VI 9%LI

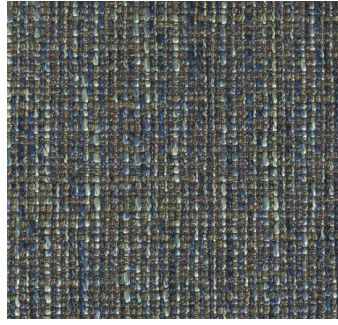
# FABRIC

## GRAIN

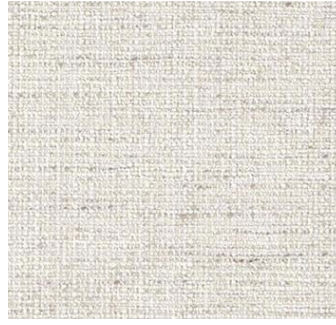
---



18.39 | cat. A  
04 GREY  
60%AC 40%PL



18.40 | cat. A  
22 BLUE  
60%AC 40%PL



22.01 | cat. A  
14 BEIGE  
60%PC 40%PI

## SCRATCH

---



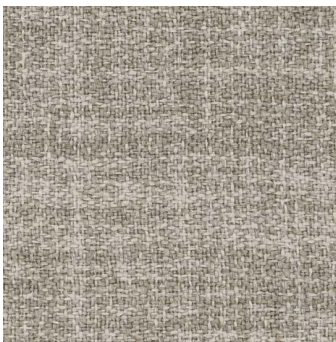
22.04 | cat. A  
02 RED & OLIVE  
46%CO 37%VI 17%PL



23.26 | cat. A  
04 MILK  
46%CO 37%VI 17%PL

## SMOOTH

---



22.10 | cat. A  
30 TAUPE  
100%PL



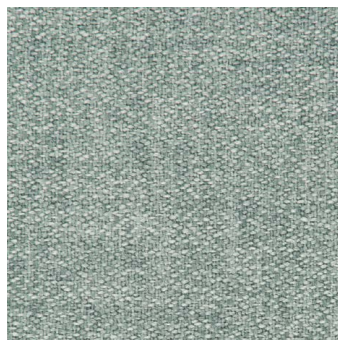
23.78 | cat. A  
02 BEIGE  
100%PL



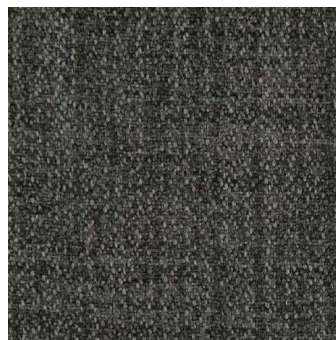
23.79 | cat. A  
04 BROWN  
100%PL



23.80 | cat. A  
13 SAGE  
100%PL



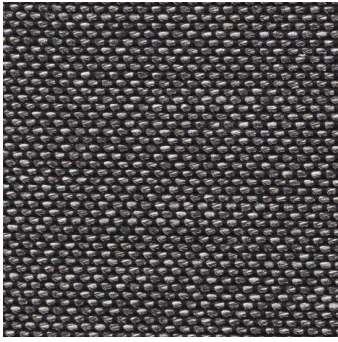
23.81 | cat. A  
06 LIGHT BLUE  
100%PL



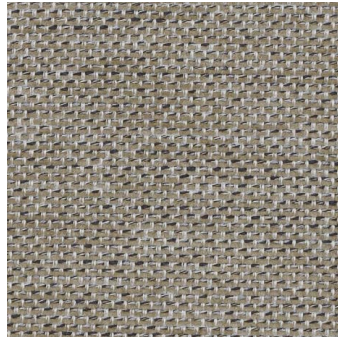
23.82 | cat. A  
08 DARK GREY  
100%PL

# FABRIC

## TONES



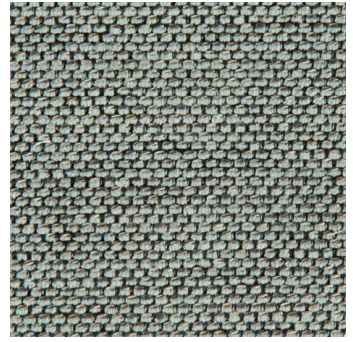
19.20 | cat. A  
26 DARK GREY  
43%VI 30%PL 20%CO 7%LI



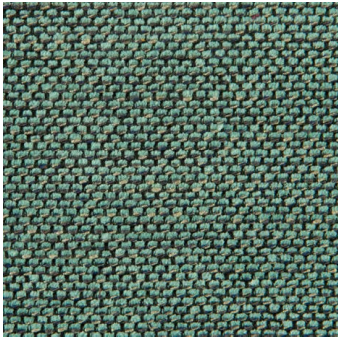
22.07 | cat. A  
07 BEIGE  
48%CO 30%PL 15%VI 7%LI



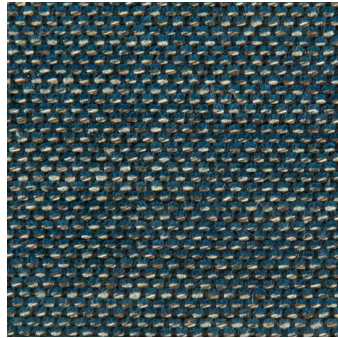
23.60 | cat. A  
09 MILK  
48%CO 30%PL 15%VI 7%LI



23.61 | cat. A  
49 LIGHT BLUE  
48%CO 30%PL 15%VI 7%LI



23.62 | cat. A  
59 AQUAMARINE  
48%CO 30%PL 15%VI 7%LI



23.63 | cat. A  
46 BLUE  
48%CO 30%PL 15%VI 7%LI



23.64 | cat. A  
50 WARM GREY  
48%CO 30%PL 15%VI 7%LI



23.65 | cat. A  
53 BROWN  
48%CO 30%PL 15%VI 7%LI

## TWIST



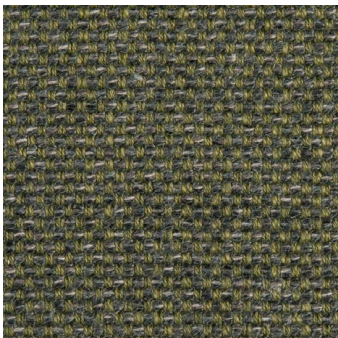
23.72 | cat. A  
01 RAW DIAMOND  
50%VI 19%CO 15%LI 11%PL 5%WO



23.73 | cat. A  
03 SAND  
50%VI 19%CO 15%LI 11%PL 5%WO



23.74 | cat. A  
12 OCEAN TIDE  
50%VI 19%CO 15%LI 11%PL 5%WO



23.75 | cat. A  
21 LAWN  
50%VI 19%CO 15%LI 11%PL 5%WO



23.76 | cat. A  
14 LIGHT ASH  
50%VI 19%CO 15%LI 11%PL 5%WO



23.77 | cat. A  
25 SHADOW  
50%VI 19%CO 15%LI 11%PL 5%WO

GIANFRANCO  
**FERRE**  
HOME

DECORATIVE FABRIC

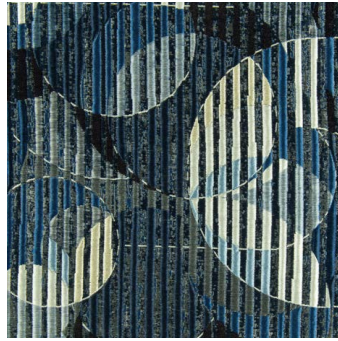
# DECORATIVE FABRIC

## CIRCLES

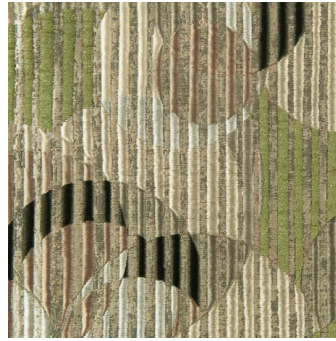
---



**23.16** | cat. B  
**01 BROWN**  
67%PL 28%PC 5%PA



**23.87** | cat. B  
**07 OCEAN**  
67%PL 28%PC 5%PA



**23.88** | cat. B  
**05 EARTH**  
67%PL 28%PC 5%PA

## FIFTIES

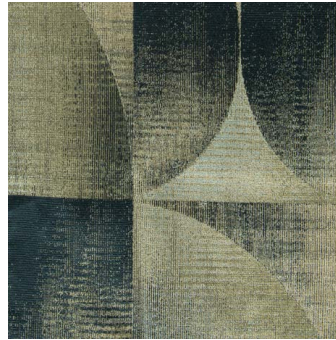
---



**22.05** | cat. B  
**01 BEIGE**  
87%PL 13%SE



**23.24** | cat. B  
**04 BLACK**  
87%PL 13%SE



**23.25** | cat. B  
**02 BLUE**  
87%PL 13%SE

## PIED DE POULE

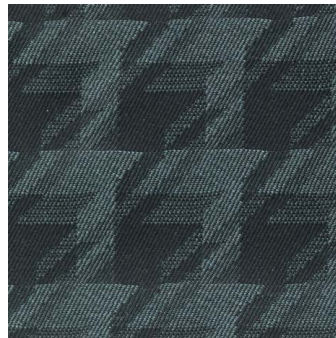
---



**19.10** | cat. A  
**GREY**  
48%WO 42%CO 10%PA



**19.11** | cat. A  
**PINK**  
48%WO 42%CO 10%PA

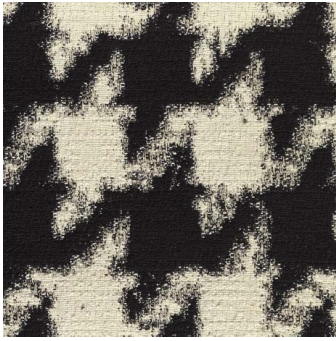


**19.12** | cat. A  
**BLUE**  
48%WO 42%CO 10%PA

# DECORATIVE FABRIC

## SEAMLESS

---



19.05 | cat. A  
**BLACK & WHITE**  
96%CO 4%EL



20.03 | cat. A  
**BRONZE**  
59%PL 29%CO 8%PC 4%AF

## SHAPE

---



23.04 | cat. A  
**01 BLACK**  
47%VI 27%CO 8%PC 7%LI 7%OL 4%AF



23.34 | cat. A  
**14 BLUE**  
47%VI 27%CO 8%PC 7%LI 7%OL 4%AF



23.35 | cat. A  
**06 CHOCO**  
47%VI 27%CO 8%PC 7%LI 7%OL 4%AF



23.36 | cat. A  
**04 OLIVE GREEN**  
47%VI 27%CO 8%PC 7%LI 7%OL 4%AF



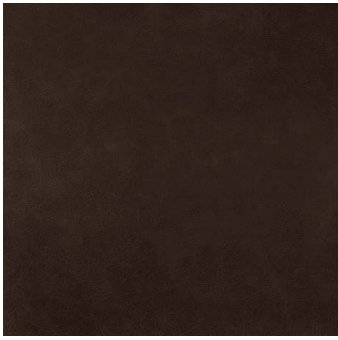
GIANFRANCO  
**FERRE**  
HOME

LEATHER

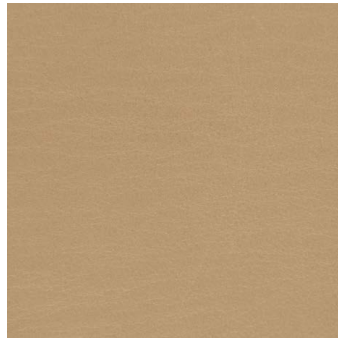
# LEATHER

## BLUSH

---



L.17.01 | cat. B  
02 BROWN



L.17.02 | cat. B  
11 GRAVEL



L.17.03 | cat. B  
18 SAND



L.17.04 | cat. B  
03 BLACK

# LEATHER

## NABUK



L.08.01 | cat. B  
SAND



L.08.02 | cat. B  
SILVER



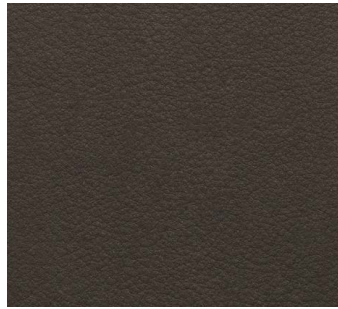
L.08.03 | cat. B  
MAUVE



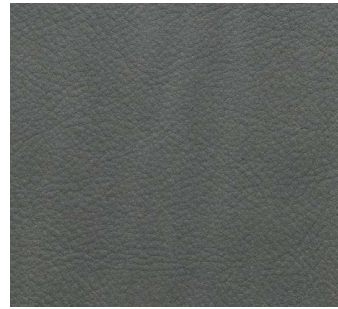
L.08.04 | cat. B  
DOVE



L.08.05 | cat. B  
BLUE



L.08.06 | cat. B  
BROWN



L.08.07 | cat. B  
DARK SILVER



L.08.08 | cat. B  
TAUPE



L.08.09 | cat. B  
RUST



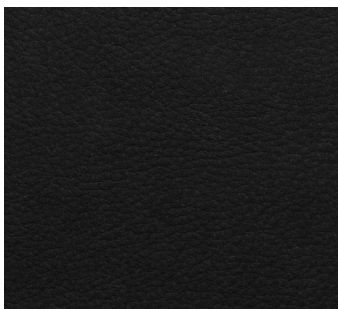
L.08.10 | cat. B  
DARK BLUE



L.08.11 | cat. B  
GREEN



L.08.12 | cat. B  
BORDEAUX



L.08.13 | cat. B  
BLACK



L.08.14 | cat. B  
MUSTARD



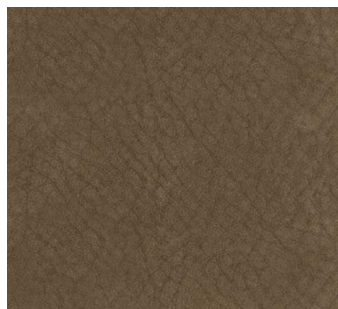
L.08.15 | cat. B  
CREAM



L.08.16 | cat. B  
LEAF



L.08.17 | cat. B  
SKY



L.08.18 | cat. B  
EARTH

# LEATHER

## ANTIQUÉ NABUK

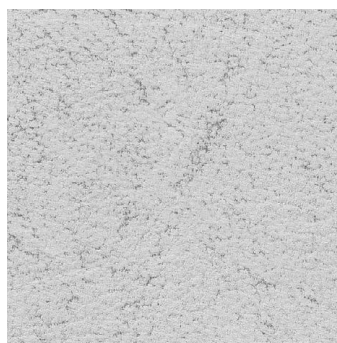
---



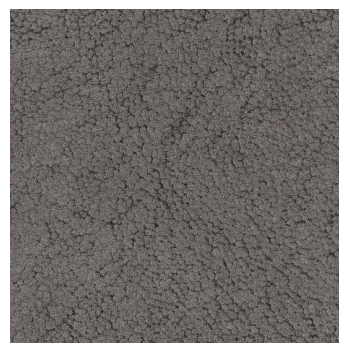
L.11.01 | cat. B  
10 NUT



L.11.02 | cat. B  
18 BROWN



L.11.03 | cat. B  
07 CHALK



L.11.04 | cat. B  
05 MUD

## PIED DE POULE NABUK

---



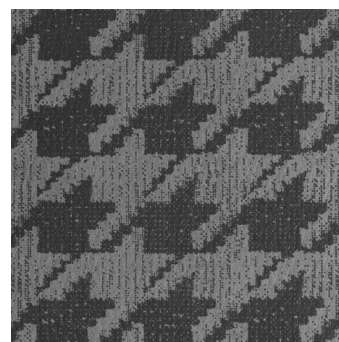
L.15.01 | cat. B  
01 WHITE



L.15.02 | cat. B  
07 TAUPE



L.15.03 | cat. B  
08 BLUE



L.15.04 | cat. B  
09 GREY

## RELIEF NABUK

---



L.16.01 | cat. C  
17 GREY



L.16.02 | cat. C  
15 BEIGE



L.16.03 | cat. C  
08 MUSK

# LEATHER

## YOUNG NABUK

---



L.18.01 | cat. A  
2312 DARK DOVE



L.18.02 | cat. A  
2300 BOMULL



L.18.03 | cat. A  
2303 DOVE



L.18.04 | cat. A  
2357 SAGE



L.18.05 | cat. A  
2370 FOG



L.18.06 | cat. A  
2380 NAVY

# LEATHER

## WILD

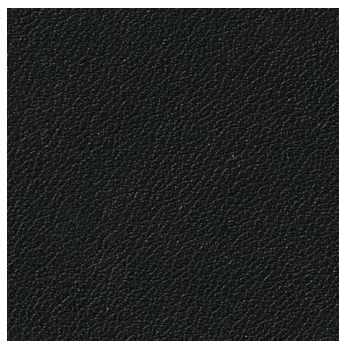
---



L.02.02 | cat. A  
CAPPUCCINO



L.02.03 | cat. A  
DARK DOVE



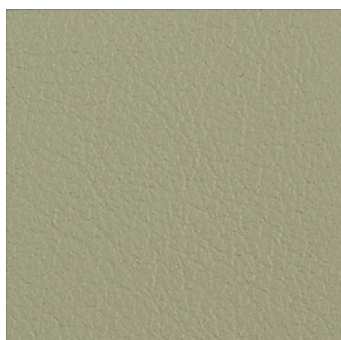
L.02.06 | cat. A  
BLACK



L.02.08 | cat. A  
ICE BLUE



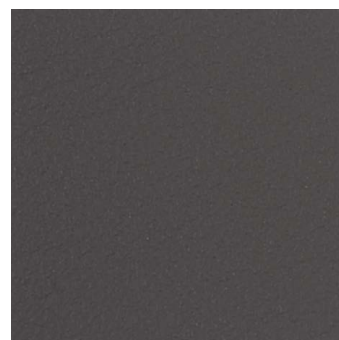
L.02.09 | cat. A  
CERULEAN



L.02.10 | cat. A  
OLIVE GREEN



L.02.11 | cat. A  
FRESH GREEN



L.02.12 | cat. A  
MUD



L.02.13 | cat. A  
DARK CHOCOLATE



L.02.14 | cat. A  
RUBY



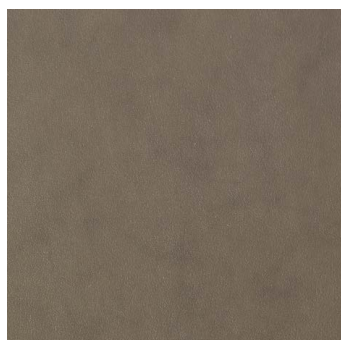
L.04.01 | cat. A  
CHALK



L.04.03 | cat. A  
BLUE



L.04.04 | cat. A  
CHESTNUT



L.04.05 | cat. A  
DOVE

GIANFRANCO  
**FERRE**  
HOME



**ONIRO**  
GROUP

via Montesolaro 14/B | 22063 Cantù (Co) Italy  
ph. +39.031.70757 | fax +39.031.711540  
info@onirogroup.it | gianfrancoferrehome.it